
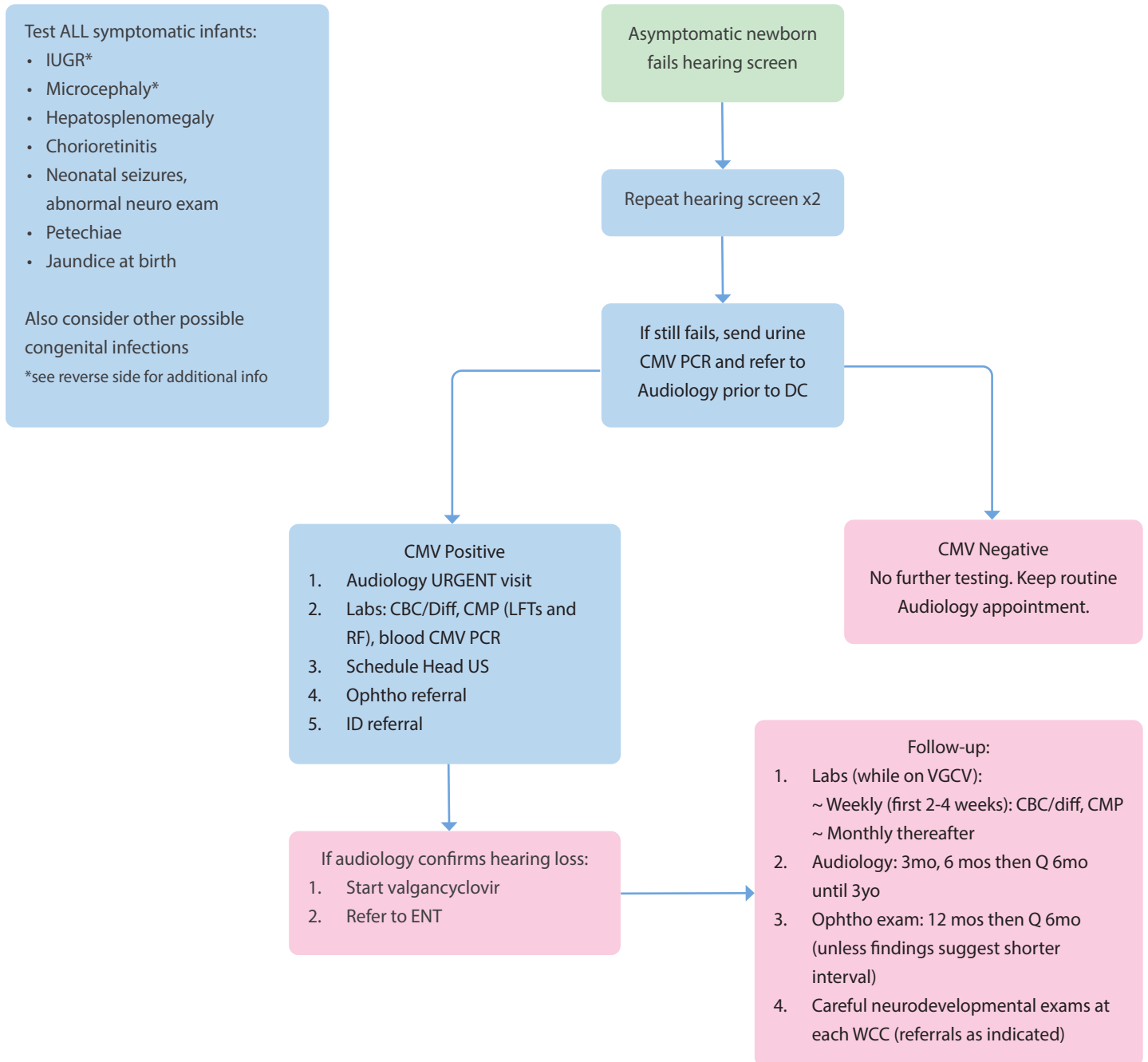


Clinical Guideline

 This guideline should not replace clinical judgment.

Newborn Targeted CMV Screening Protocol


Newborn Nursery



Clinical Guideline

Newborn Targeted CMV Screening Protocol

Newborn Nursery

 This guideline should not replace clinical judgment.

**** Symptomatic Infants:**

IUGR = < 3%ile for weight

Microcephaly = < 3%ile for head circumference

Positive CMV:

1. Urgent ID referral

- Send Cerner message to Beth Marshall for ID appointment

2. Urgent Audiology evaluation

- Send Cerner message to: Sheri Stoots and Audiology-RMC-Messages

- "Urgent Audiology referral needed for CMV positive infant"

- Appointment will be made within the week

3. If fails repeat Audiology evaluation, urgent ENT referral:

- Send Cerner message to Kelley Dodson and Lauren Riggs

4. Call CHoR Radiology to schedule head ultrasound

- Place order in Cerner

- Call: 628-4977 to schedule

5. Place Ophthalmology referral (usual process okay)

Congenital Cytomegalovirus Guideline

Executive Summary

Children's Hospital of Richmond at VCU Congenital Cytomegalovirus Workgroup

General Pediatrics Owner: Tiffany Kimbrough, MD

Pediatric ENT: Kelley Dodson, MD

Pediatric Infectious Disease: Beth Marshall, MD

Approved (June 2020)

CHoR Clinical Guidelines Committee:

Jonathan Silverman, MD, MPH

Ashlie Tseng, MD

CHoR Quality Council, Executive Sponsor:

Matthew Schefft, DO, MSHA

Dory Walczak, MS, RN, NE-BC, CPHQ

Chief of General Pediatrics:

Romesh Wijesooriya, MD

References

Gantt S, Dionne F, Kozak FK, Goshen O, Goldbarb DM, Park AH, et al. Cost-effectiveness of universal and targeted newborn screening for congenital cytomegalovirus infection. *JAMA Pediatr.* 2016 Dec 1; 170 (12): 1173-80.

Bergevin A, Zick CD, McVicar SB, Park AH. Cost-benefit analysis of targeted hearing directed early testing for congenital cytomegalovirus infection. *Int J Pediatr Otorhinolaryngol.* 2015 Dec, 79(12): 2090-3.

Citation

Title: Congenital Cytomegalovirus Guideline

Authors:

Children's Hospital of Richmond at VCU

Tiffany Kimbrough, MD

Kelley Dodson, MD

Beth Marshall, MD

Date: June 2020

Retrieval website: <http://www.chrichmond.org/clinical-guideline-Congenital-Cytomegalovirus>

Example:

Children's Hospital of Richmond at VCU, Kimbrough T, Dodson K, Marshall B. Congenital Cytomegalovirus Guideline. Available from:

<http://www.chrichmond.org/clinical-guideline-Congenital-Cytomegalovirus>