
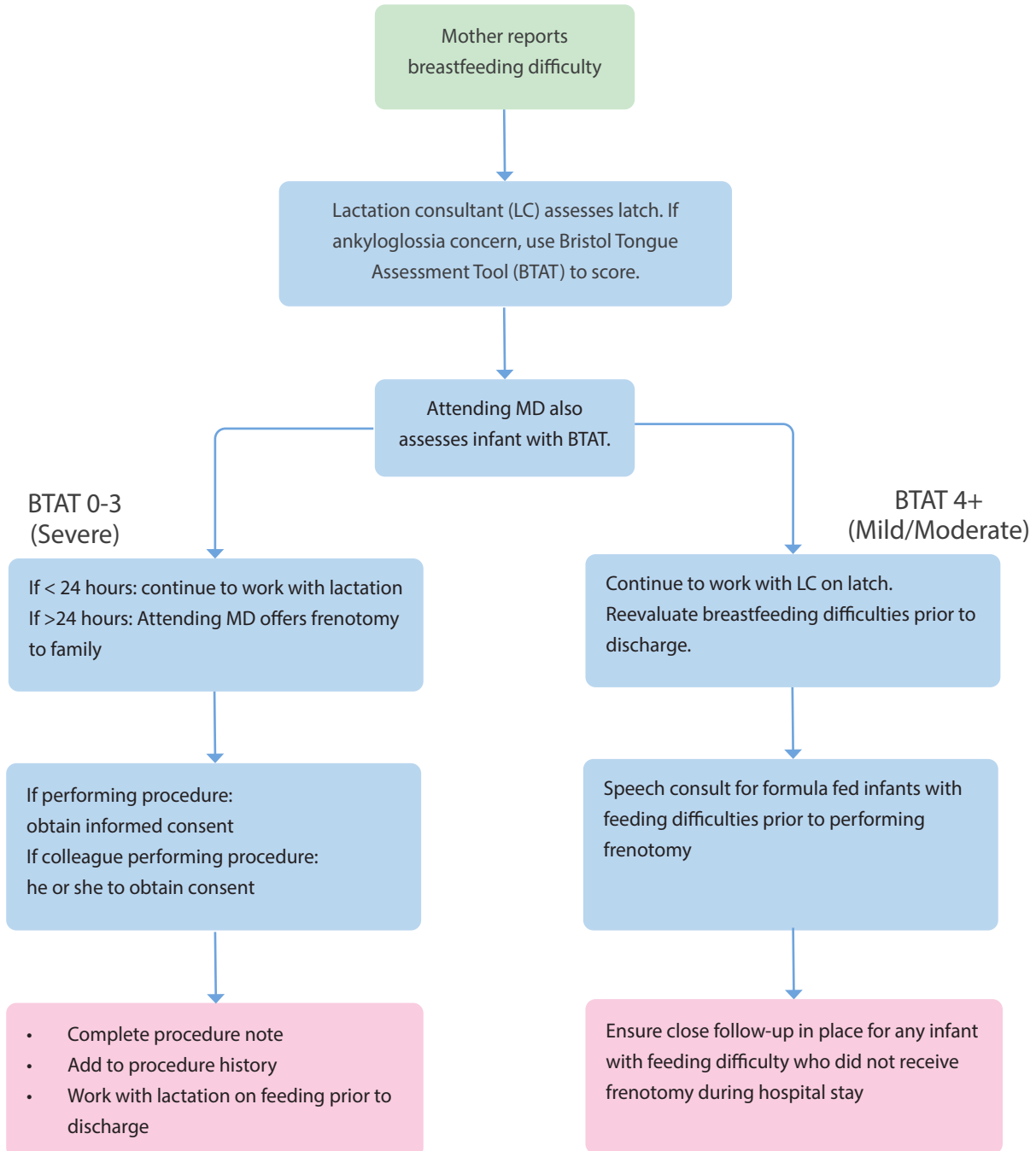


Clinical Guideline

Ankyloglossia

Newborn Nursery

 This guideline should not replace clinical judgment.



Ankyloglossia Guideline

Executive Summary

Children's Hospital of Richmond at VCU Ankyloglossia Workgroup

General Pediatrics Owner: Tiffany Kimbrough, MD

Nursing: Kym Gee, MM, BSN, CNML

Lactation: Valerie Coleman, RN, MSN, IBCLC, FACCE, LCCE

Approved (June 2020)

CHoR Clinical Guidelines Committee:

Jonathan Silverman, MD

Ashlie Tseng, MD

CHoR Quality Committee:

Matthew Schefft, DO, MSHA

Dory Walczak, MS, RN, NE-BC, CPHQ

Chief of General Pediatrics:

Romesh Wijesooriya, MD

References

Ingram J, Johnson D, Copeland M, Churchill C Taylor H, Emond A. The development of a tongue assessment tool to assist with tongue-tie identification. Arch Dis Child Fetal Neonatal Ed. 2015 Jul; 100 (4): F344-8.

Araulo MDCM, Freitas RL, Lima MGS, Kozmhinsky VMDR, Guerra CA, Lima GMS, et al. Evaluation of the lingual frenulum in newborns using two protocols and its association with breastfeeding. J Pediatr. 2019 April 25, Epub.

Citation

Title: Ankyloglossia Guideline

Authors:

Children's Hospital of Richmond at VCU

Tiffany Kimbrough, MD

Kym Gee, MM, BSN, CNML

Valerie Coleman, RN, MSN, IBCLC, FACCE, LCCE

Date: June 2020

Retrieval website: <http://www.chrichmond.org/clinical-guideline-Ankyloglossia>

Example:

Children's Hospital of Richmond at VCU, Kimbrough T, Gee K, Coleman V. Ankyloglossia Guideline. Available from:

<http://www.chrichmond.org/clinical-guideline-Ankyloglossia>