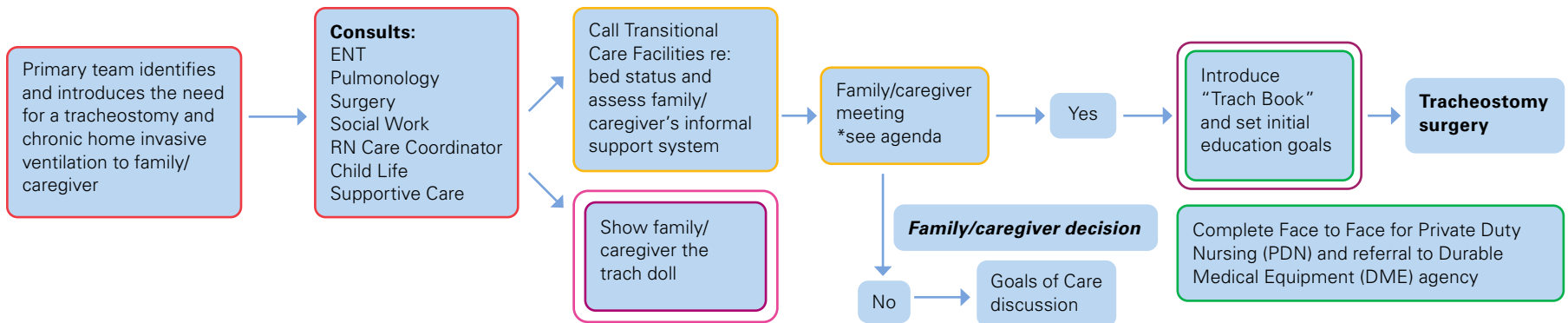
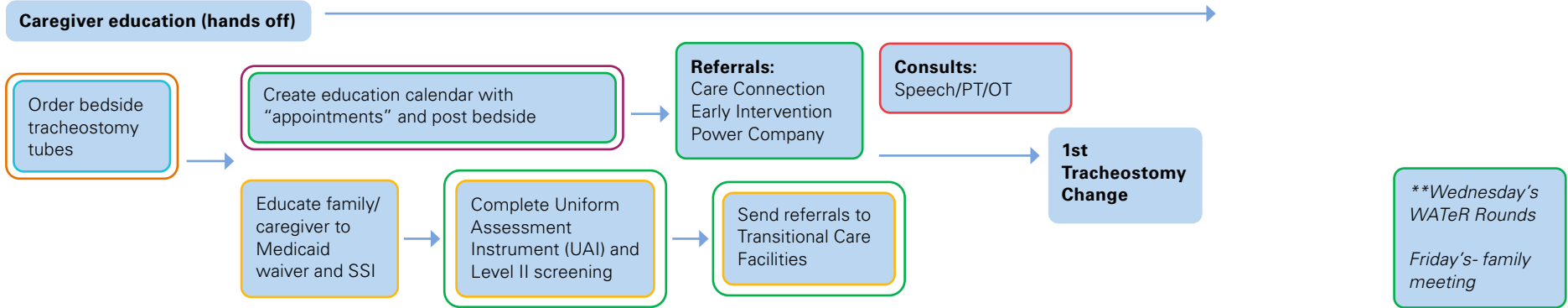


PICU discharge process map for new chronic home invasive ventilation

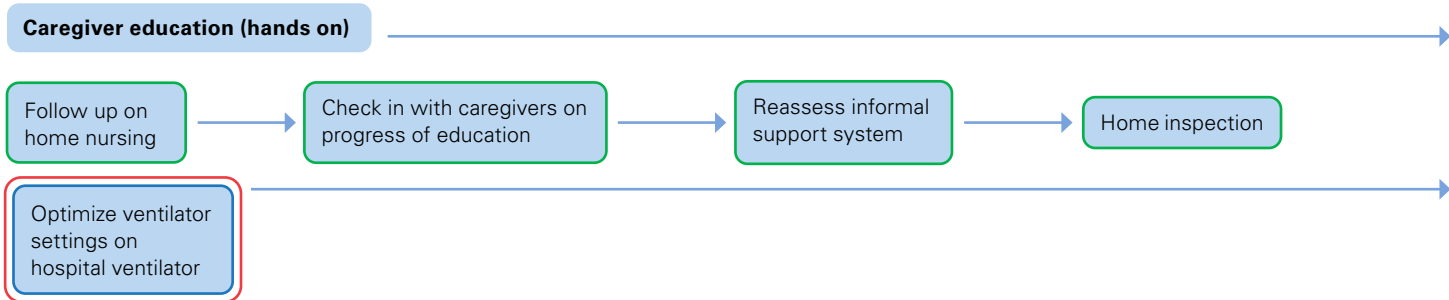
Pre-Tracheostomy



Post-Trach Week 1



Post-Trach Week 2-3

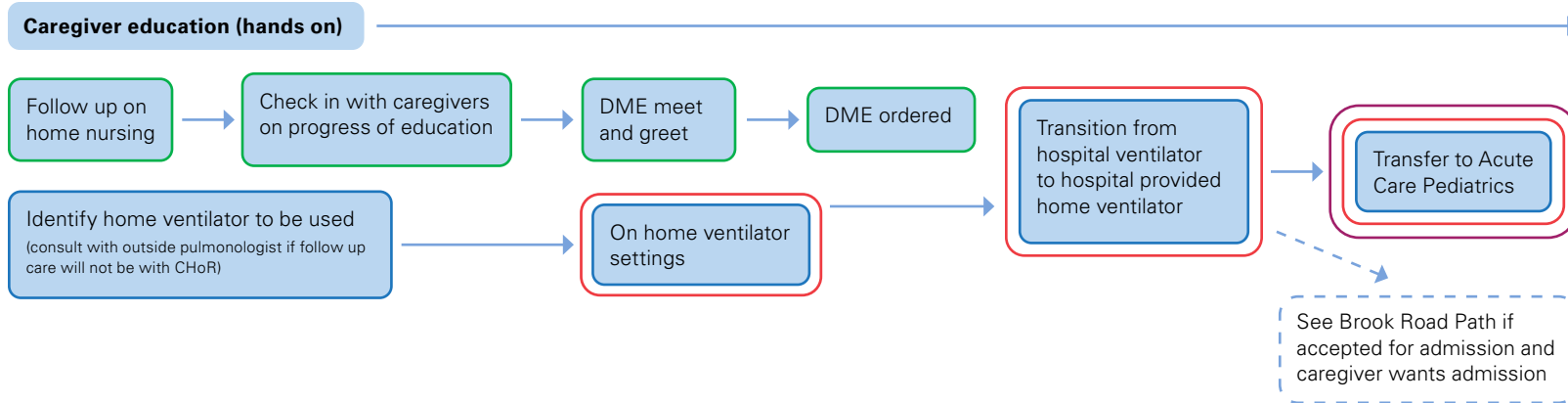


KEY

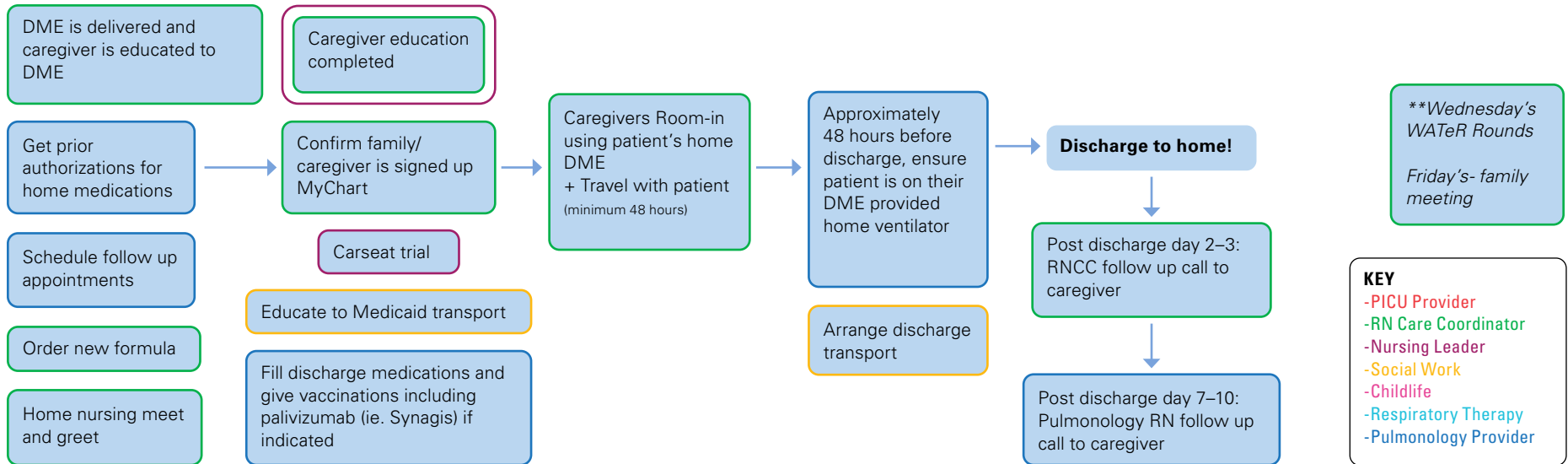
- PICU Provider
- RN Care Coordinator
- Nursing Leader
- Social Work
- Childlife
- Respiratory Therapy
- Pulmonology Provider
- ENT

PICU discharge process map for new chronic home invasive ventilation - post-trach week 4-7

Post-Trach Week 4-5



Post-Trach Week 6-7



KEY

- PICU Provider
- RN Care Coordinator
- Nursing Leader
- Social Work
- Childlife
- Respiratory Therapy
- Pulmonology Provider

Tracheostomy family/caregiver meeting agenda

Participants

- PICU Medical Provider:
- Pulmonology Physician and Alex Bediako
- ENT Provider:
- Social Work:
- RNCC:
- Childlife:
- RT Leadership: Jen Reed
- Nursing (Clinical Coordinator):
- Family:

Agenda

- PICU- Medical update including the reason a tracheostomy is being considered, benefits of a tracheostomy?
- ENT- details about the tracheostomy surgery and management of the tracheostomy
 - What does life with a tracheostomy look like? At home? Follow up needed
- Pulmonology- Management of the ventilator- What does life with a ventilator look like? At home? (caregiver eyes on at all times), Follow up needed
- Care Coordination- Progression from OR to DC and support for DC (brief summary)
 - Home assessment, DME, Home RN
 - Expectations for participation from family- ie: two caregivers, rooming in, etc
 - Dual DC plan- Home and Transitional Care Facility
 - Weekly family meetings, complex care WATeR rounds on Wednesdays, Complex Care Clinic support
- RT/RN- Education to “Trach book” and teaching process
- Family Questions
- Next Steps - Who is going to follow up with who and when?

PICU discharge process for new chronic home invasive ventilation executive summary

Children's Hospital of Richmond at VCU health pediatric complex discharge workgroup

Care Coordination Owner: Patty Benninghove, MSW, LCSW
Pediatric Intensive Care Owner: Dale Purrington, MSN, RN, CPNP-AC
Pediatric Pulmonology: Alex Bediako, RN
Pediatric Pulmonology: Dr. Jonathan Ma, MD
Pediatric Intensive Care: Elizabeth Overstreet, RN
Pediatric Respiratory Therapy: Jennifer Reed, RT
Care Coordination Nursing: Audrey Spradling, RN

Approved (February 2022)

References

Baker CD, Martin S, Thrasher J, Moore H, Baker J, Abman SH, Gien J. A Standardized Discharge Process Decreases Length of Stay for Ventilator-Dependent Children. *Pediatrics*. 2016; 137(4):e1-e9.

Dolan LG, Horn MH, O'Connell B, Parsons SK, Roussin CJ, Weinstock PH, Graham RJ. This Is How Hard It Is- Family Experience of Hospital-to-Home Transition with a Tracheostomy. *AnnalsATS*. 2020; 17(7): 860-868.

Kuo DZ and Houtrow AJ. Recognition and Management of Medical Complexity. Council on Children with Disabilities- Recognition and Management of Medical Complexity. *Pediatrics*. 2016; 138(6): e1-e13.

Sterni LM, Collaco JM, Baker CD, Carroll JL, Sharma GD, Brozek JL, Finder JD, Ackerman VL, Arens R, Boroughs DS, Carter J, Daigle KL, Dougherty J, Gozal D, Kevill K, Kravitz RM, Kriseman T, MacLusky I, Rivera-Spoljaric K, Tori AJ, Ferkol T, Halbower AC. An Official American Thoracic Society Clinical Practice Guideline: Pediatric Chronic Home Invasive Ventilation. January 2016

Kun SS, Edwards JD, Ward SLD, Keens TG. Hospital Readmissions for Newly Discharged Pediatric Home Mechanical Ventilation Patients. *Pediatric Pulmonology*. 2012; 47(4): 409-414.

Ventilator Care Program: Caregiver Education. Children's Hospital Colorado. 2013

Citation

Title: PICU discharge process for new chronic home invasive ventilation

Authors:

- Patty Benninghove, MSW, LCSW
- Dale Purrington, MSN, RN, CPNP-AC
- Alex Bediako, RN
- Dr. Jonathan Ma, MD
- Elizabeth Overstreet, RN
- Jennifer Reed, RT
- Audrey Spradling, RN

Date: February 2022

Retrieval Website:

Example: